

# Gravity Dual Control Gate

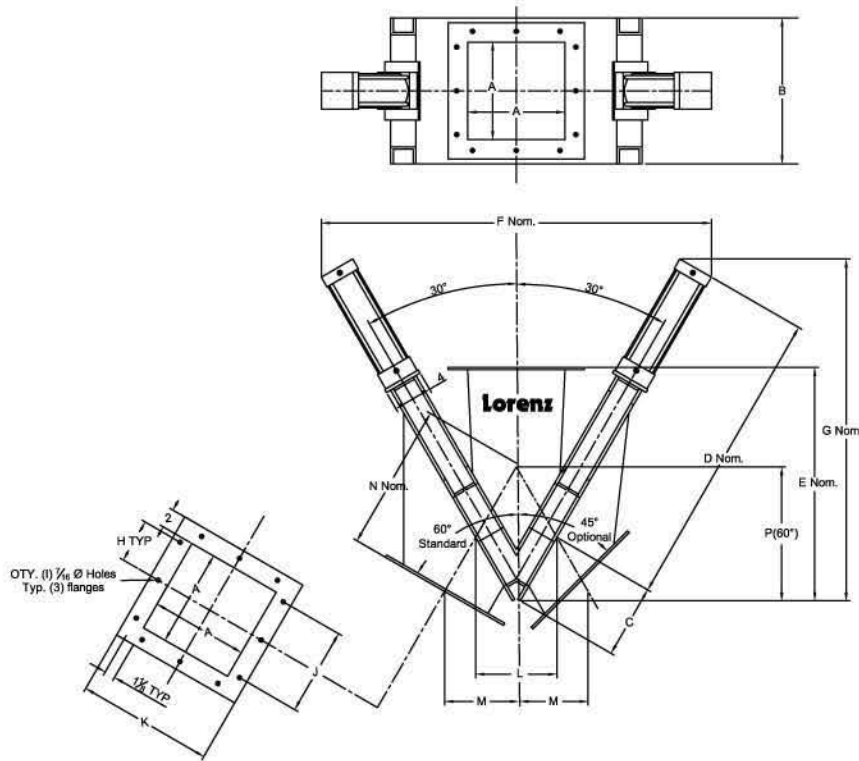
## Series "B"



### Standard Features

- Stainless steel material contact points
- Dust tight seals
- Lightweight aluminum frame, corrosion resistant
- Choice of stainless, aluminum and carbon inlets and outlets
  - 60° configuration standard -45° optional
- No internal ledges for product to collect
- Rated for 82°C (180°F)

# Gravity Dual Control Gate Series "B"



Size	A	B	C	D	E	F	G	H	I	J	K	L	M(60°)	M(45°)	N(60°)	N(45°)	P(60°)
5' x 5'	10	5	22 3/4	16	30 3/4	26	3 5/8	8	7 1/4	9	6 1/4	5 5/8	5 7/16	10 1/2	9	9 1/4	
6' x 6'	11	5 1/4	25 1/2	17 1/8	33 3/4	28 1/4	4 1/8	8	8 1/4	10	6 1/2	5 3/4	6	11 1/2	8 1/2	10 3/8	
8' x 8'	13	6 1/4	30 1/2	20 3/4	39 3/4	34	3 1/2	12	10 1/4	12	7 1/2	6 3/8	6 5/8	13	9 3/8	12	
10' x 10'	15	7 1/4	35 1/2	24	45 1/2	39	4 1/2	12	12 1/4	14	8 3/4	7 3/8	7 1/2	14 3/4	10 1/2	13 3/4	
12' x 12'	17	8 1/4	40 1/2	26 5/8	51 3/4	44 1/4	2 3/4	20	14 1/4	16	9 1/2	8 3/16	8 1/8	16 3/8	11 1/2	15 3/8	
14' x 14'	19	9 1/4	45 1/2	31	57 3/4	49 1/2	3 1/4	20	16 1/4	18	10 1/2	9	9 1/4	18	13	17 1/8	
16' x 16'	21	10 1/4	50 1/2	35 3/8	63	54	3 3/4	20	18 1/4	20	11 1/2	9 1/4	9 1/2	18 1/2	13 1/4	18 7/8	
18' x 18'	23	11 1/4	55 1/2	37	69 3/4	60	4 1/4	20	20 1/4	22	12 1/2	10 3/4	10 1/4	21 1/2	14 3/4	20 5/8	
24' x 24'	30	14 5/8	74 7/8	36 1/2	91 1/2	79 5/8	3 3/4	28	26 1/4	29	16 5/8	13 7/16	13 5/16	26 7/8	18 3/4	27 5/8	

## Options

- 316 stainless material contact
- High temperature service
- Hand wheel or crank, electric actuation
- Single and double solenoids
- Variable and infinite positioning controls